

## Contents

---

### Page 1

Welcome back!

Entrance Area

---

### Page 2

Wraparound Care

RAAC

Parents evening

Family Link Officer

Job Vacancies

---

### Page 3

Diary Dates

---

### Page 4

---

### Page 5

---

### Page 6

---

# Colwick Times



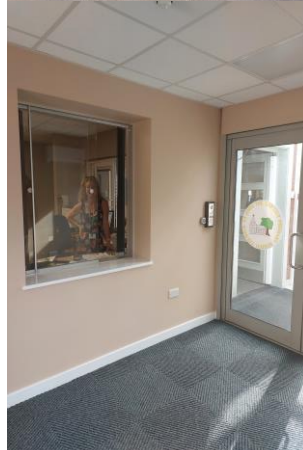
## 8<sup>th</sup> September 2023

### Welcome back!

Welcome back to academic Year 23/24! It has been lovely catching up with the pupils over the last couple of days and also meeting our new starters. I can't believe how much some pupils have grown! There are lots of new things to get used to this term so please bear with us whilst we all adjust.

### Entrance Area

If you need to visit the school office you will see we have had a secure entrance lobby built over the summer. This will mean you can speak to the office without being caught in the traffic in the school corridor. When visiting the school office area please buzz at the gate as before and you will be buzzed into the new area when the office can accept you.



## Our School

---

St John the Baptist  
C of E Primary School

### Address

Vale Road  
Colwick  
NG4 2ED

### Phone

0115 911 5599

### Email

parents2@st-johns-pri .notts.co.uk

### Website

www.st-johns-pri.notts.sch.uk

## Wraparound care

The after school care, provided by Premier Education, began yesterday. This means that pupils can be cared for until 5.45pm. Booking and payment is direct at <https://www.premier-education.com/parents/venue/courses/11230-834228/?back=1&school=NG4%202ED>

The Breakfast Club will continue to run by school and still starts at 7.45am if you need to use it through the drop in service, and is payable on your School Money account.

Miss Ellis, Mrs Khan and Miss Wilson look forward to supporting your children.

## RAAC

You will have heard in the news over the last week about concerns regarding RAAC in school buildings. At present we are not a school on the Governments concern list and understand that our building does not contain this material. Therefore, no areas of our building have been closed.

## Parents Evening

As usual we will be holding our settling in parents evening meetings on Tuesday 26<sup>th</sup> and Thurs 28<sup>th</sup> September between 3.30pm and 6pm. A booking link will go live on 18<sup>th</sup> September to arrange these meetings. If your child is on the SEND register, class teachers will be in contact to arrange an alternative meeting with you.

## Family Link Officer

This year Mrs Whitt will be working in a slightly different role as our school's Family Link Officer. This means she will be available to talk and meet with parents and carers and if she cant help she will signpost you to support you may need. This may be relating to mental health, attendance, anxiety, illness, bereavement and behaviour. She will continue in her role as ELSA teacher and work individually with referred pupils and will also follow up absence and attendance. Mrs Whitt is no longer class based so is contactable through the school office between 8.30am - 3.30pm. This is an extension of our mental health offer which Mrs Bloom leads on. She is keen that you know that this is not only for pupils but parents and carers too.

## Job Vacancies

We have two vacancies open from today. We are looking for a part time Administration Assistant and a Mid-day Supervisor. Details on both of these roles can be found on our school website or on the NCC jobs page. Please do share this with anyone who may be suitable.

## Diary Dates

Wednesday 13<sup>th</sup> September - School photos (please wear full uniform)

Tuesday 19<sup>th</sup> September - Archway consultation parents meeting  
5pm school hall

Wednesday 20<sup>th</sup> September - After School Church (bookable at [afterschoolchurch@yahoo.com](mailto:afterschoolchurch@yahoo.com))

Wednesday 18<sup>th</sup> October - After School Church ((bookable at [afterschoolchurch@yahoo.com](mailto:afterschoolchurch@yahoo.com))

Monday 23<sup>rd</sup> October - Friday 3<sup>rd</sup> October - half term holiday 2 weeks

Monday 6<sup>th</sup> November - pupils return to school

Monday 13<sup>th</sup> November - Friday 17<sup>th</sup> November - Y6 residential to Rock UK

Monday 13<sup>th</sup> November - Anti-bullying week

Wednesday 15<sup>th</sup> November - After School Church (bookable at [afterschoolchurch@yahoo.com](mailto:afterschoolchurch@yahoo.com))

Wednesday 6<sup>th</sup> December - After School Church (bookable at [afterschoolchurch@yahoo.com](mailto:afterschoolchurch@yahoo.com))

Wednesday 7<sup>th</sup> December - Parents support group for mental health coffee morning

Tuesday 12<sup>th</sup> December - whole school panto trip return 6pm

Monday 25<sup>th</sup> December - Weds 3<sup>rd</sup> January - Christmas Holidays

Thursday 4<sup>th</sup> January - pupils return for the spring term